



# *HelloxSugar* *Diy Mobile Kit Guide*

**Tribal Mobile**

# Materials Needed

- HelloxSugar DIY Mobile Kit
- Needle
- Fiber Fill Stuffing
- Stuffing Tool (usually comes with stuffing)
- Straight Pins (Optional)



# Blanket Stitch Tips

If this is your first time sewing with a blanket stitch, I recommend watching a couple of tutorials on youtube and practicing on a scrap piece of fabric until you get it down! If you have any questions about the stitch, please feel free to message me about it as well :)

# Blanket Stitch Tips

- Use a longer embroidery needle for easier handling while stitching!
- Start the blanket stitch along the straightest edge. Leave an opening of about 1 inch for stuffing.
- Try to place each stitch about the same width apart, this makes the edges look so beautiful!
- I usually wrap the string around the shape about 6 times to get an idea of how much embroidery thread I need to use.
- Once closed, Pull the floss through the felt shape, and snip off the extra end. The floss

# Embroidery Floss Tips

- Embroidery floss comes with 6 separate strands. I like to sew using only 1-3 strands of embroidery floss. This gives the felt shapes a cleaner finish around the edges and allows for intricate sewing.
- To easily separate the floss, measure the length of floss with all 6 strands. Hold one end of the measured section with your left hand. "Flick" the other end to separate and select 1-3 strands, and begin to pull on them while continuing to hold with your left hand.
- I measure my floss by loosely draping the floss around the edges of the shapes about 5-6 times. This ensures I have enough to last while I sew that shape, and reduces the downtime for having to start/stop the sewing process.



# Fiber Stuffing Tips

- Try starting with a small amount to fill in all corners and edges of the felt shape.
- Do not pack too "tight" as this will leave your felt shape feeling more like a clumpy rock and less like a plushie! You want the shape to feel full and firm but not hard.
- Once the corners and edges are filled, then you can increase the amount of stuffing to fill in the center.
- When the stuffing reaches your small opening, you can begin to close the felt shape. If needed, do one or two stitches and add more stuffing until it feels "full" and you are completely closed!

# Fiber Stuffing Tips

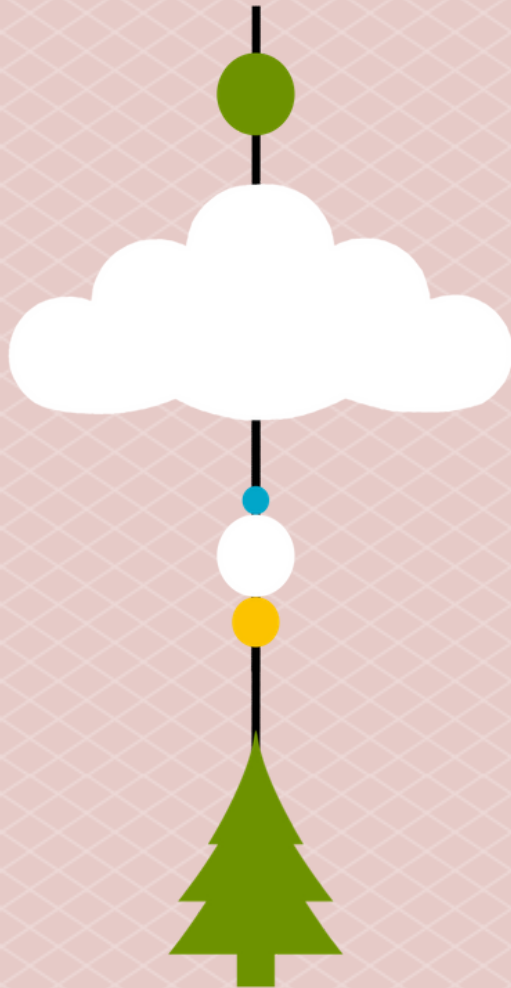
- For the moon and mountains, I like to make sure to get a small amount of stuffing in each "point" to hold the shape.
- For the clouds, make sure again not to stuff too tight! This will allow your clouds to stay fluffy and soft!
- For the trees, I make sure to fill the top point, and the bottom two points, but the rest of the tree is mostly filled in the middle only. It is a little hard to get into these small crevices, but the end should still look great!
- Don't rush this step, take your time and enjoy. The stuffing is what brings your felt shapes to life :)



# Lets get Started!

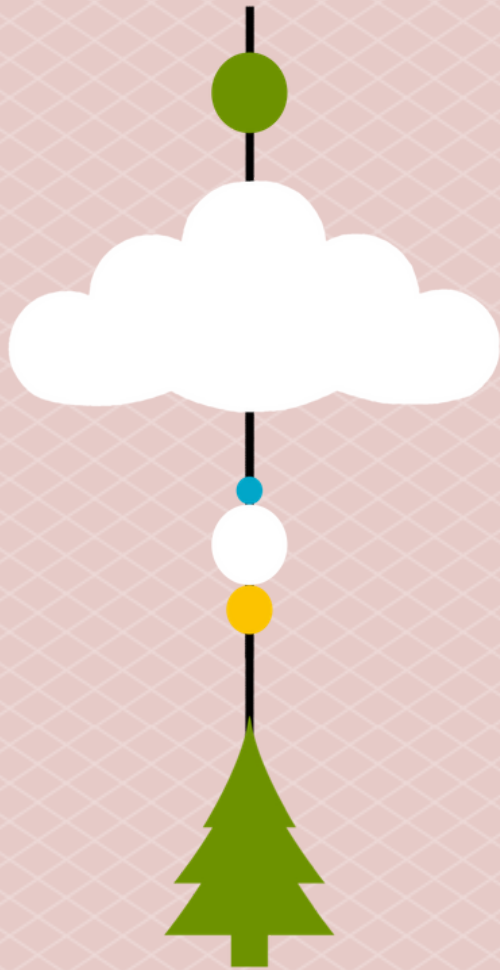
- Pick your first shape to start with and pin together!
- Select the matching embroidery thread and measure the length of thread you need for that shape.
- Begin your blanket stitch and sew all the way around the shape until you get about an inch away from your starting point!
- Stuff the felt shape, and then finish closing the felt shape. Repeat on all felt shapes.
- Once all shapes are sewn and filled, its time to start putting it together!
- Please see attached diagram for threading the pieces onto the mobile.

# First Strand



- You will find six strings tied onto your wood ring. Each string will have two sections. We will thread one of those sections with the felt shapes, and leave one for hanging the mobile.
- It doesn't matter which one you start with, just pick a string!
- Thread your needle. I like to use a long needle for this step because it is easier to push through the bigger felt shapes.
- Follow this pattern for your first strand! Your needle will be inserted at the top of the shape, and should be pushed through to the bottom of the shape.

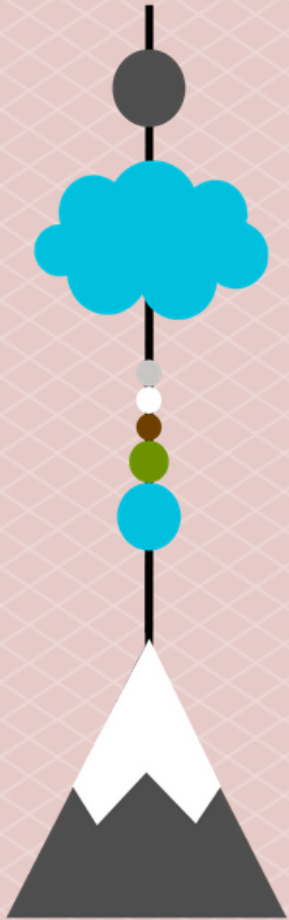
# First Strand



- I like to tie knots after all of the felt balls and felt shapes. This helps to secure the shape in its place.
- Be sure to tie a knot under the felt ball that supports the small beads! (Beads are always optional to add)
- When you are ready for your last felt shape, just push the needle through the top point and tie a knot! There isn't a need to push the needle all the way through the shape, since this is the last piece!

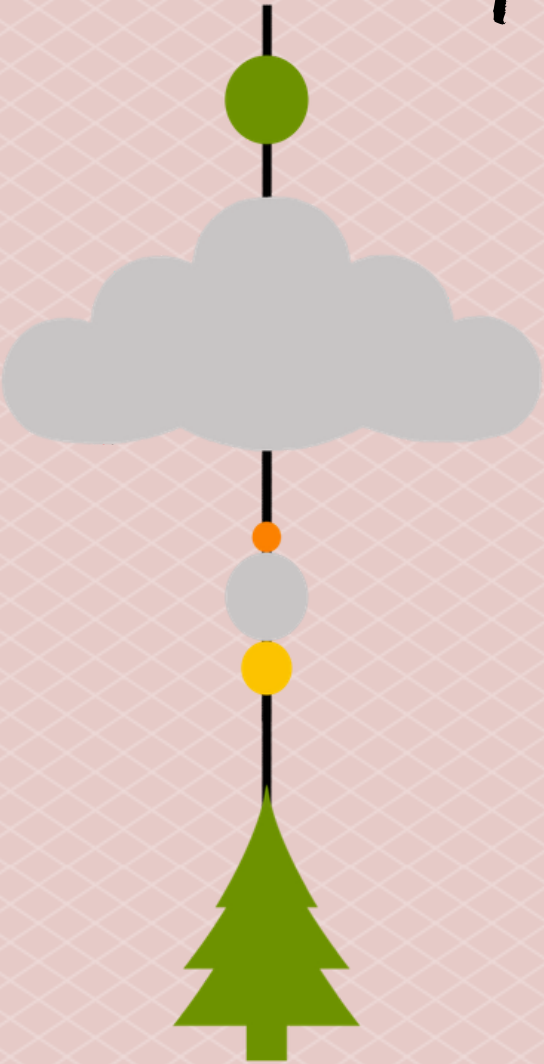


# Second Strand



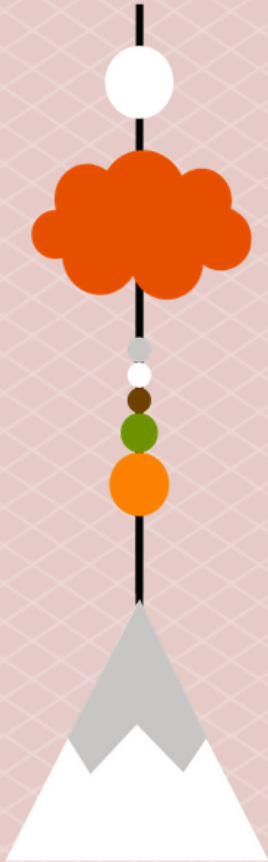
- Now, find your second strand either to the left or right of the first strand! Your choice :)
- Repeat the steps here while following this pattern!
- Again, when you get to the last shape, just tie a knot at the top point.

# Third Strand



- Now, find your Third strand and repeat the steps here while following this pattern!
- Again, when you get to the last shape, just tie a knot at the top point.
- Remember that each string will have two sections! One section will be full with shapes, and the other will be loose!

# Fourth Strand

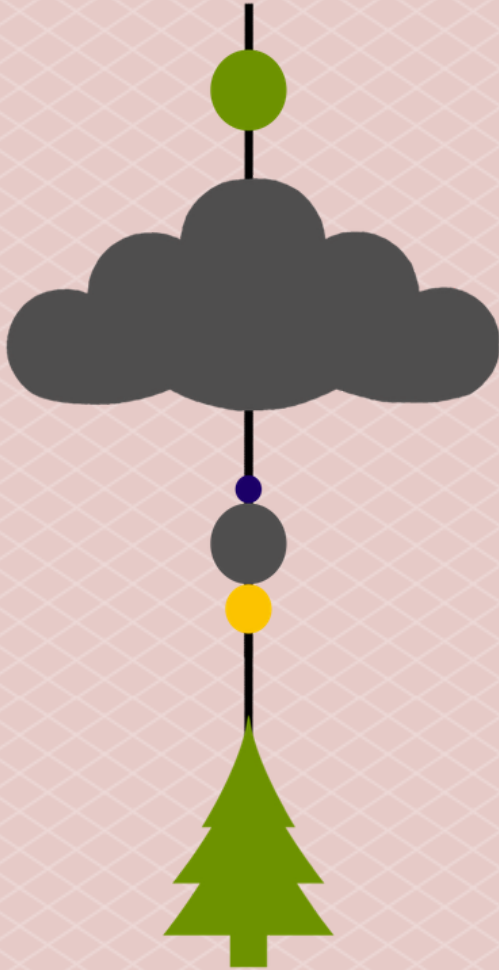


- Find your fourth strand!
- Repeat steps, following this pattern!

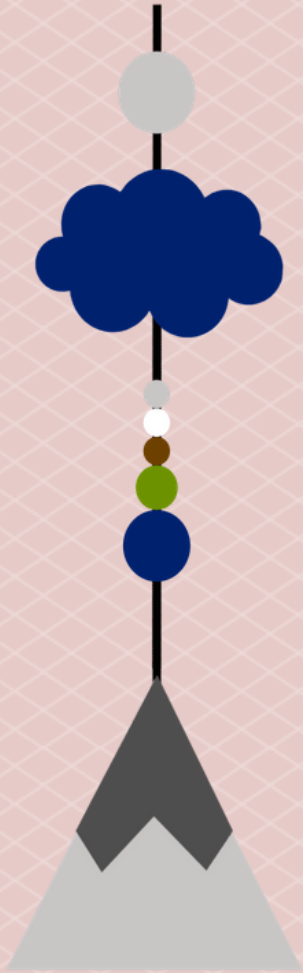


# Fifth Strand

- Find your fifth strand!
- Repeat steps following this pattern!



# Sixth Strand



- Find your sixth strand!
- This will be your last strand that completes the outer part of the mobile.
- Once you are done with this, gather your moon, wood tree (with string) and your last brown felt ball!

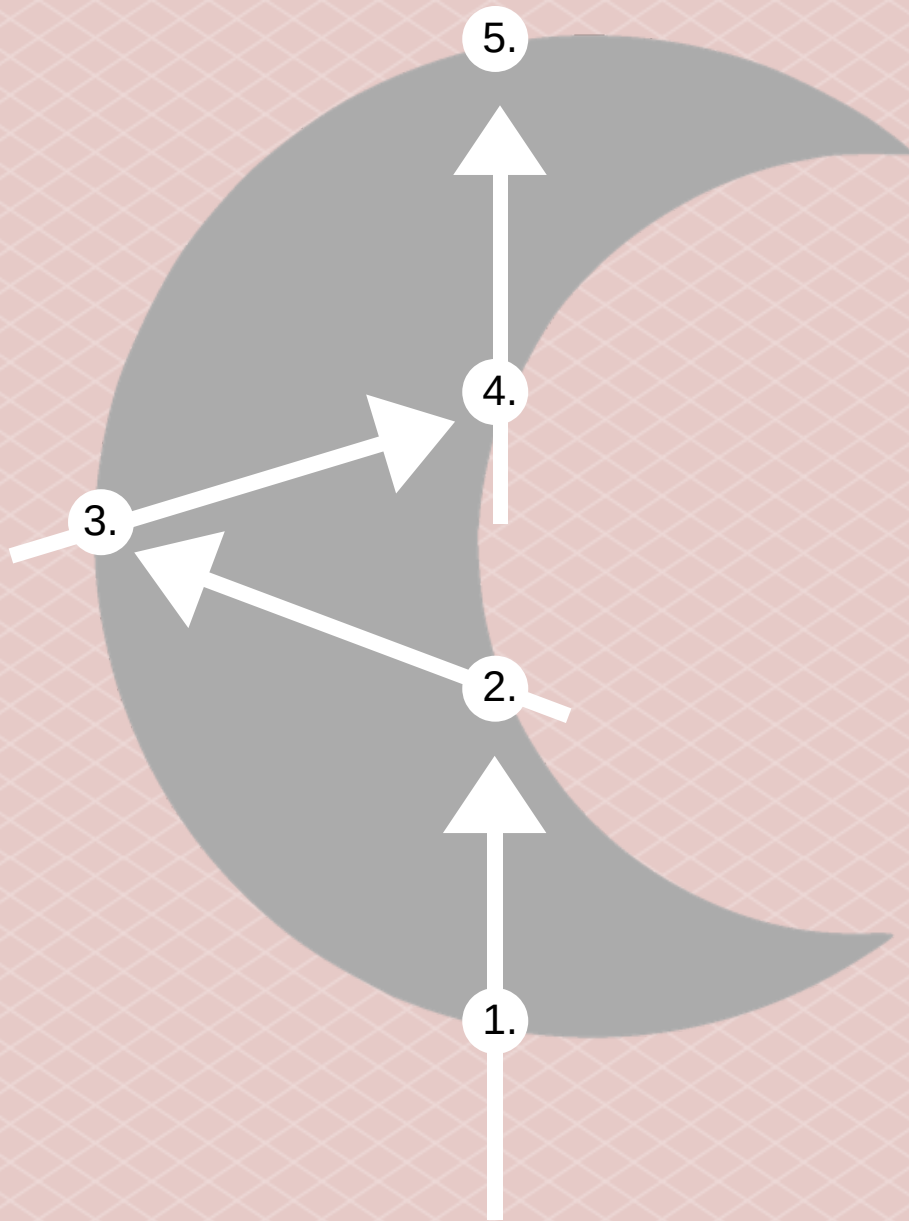
# Center Strand



- I have pre-tied the string for you on the wood tree.
- Thread the needle with the opposite end, and push you needle through the brown felt ball.
- Pull that felt ball all the way down about 1.5 inches from the top of the tree!
- Now its time to thread the moon!
- This is a little bit trickier so I am going to show you where to position your needle/thread on the next page!



# Thread the Moon



- Start your needle at point 1.
- Push your needle up to point 2.
- At this point you will want to push your needle back into the moon at a similar point, but not exactly the same point (you don't want the string to pull through so try to catch it on a stitch). Push all the way to point 3.
- Repeat these steps until you are pushed all the way through point 5!

# Final Assembly!

- Now that you have finished threading all of your felt shapes onto the strings, its time to put it together!
- Find your two beads that we will use to secure the top of the mobile. One is a wood cylinder shape, and the other is a larger round wood bead.
- Find your metal ring as well!
- Gather all of your loose strings and bring them to the top. This is where I roughly balance the mobile!

# Final Assembly!

- Holding the mobile in one hand, grab the "moon strand" and bring it to the center of the mobile, catching the loose end of the moon strand with your other strings!
- The moon will hang in the center of the mobile and a knot will secure it in place.
- Now, you can balance the mobile again by gently tugging on the wood ring where needed. If one side is hanging lower, gently tug on the other side. This is sort of a trial and error stage, just get it the best you can! You can always adjust later.



# Final Assembly!

- You should now be holding 7 strings total, all gathered together. Take these seven strings and push them through the cylinder shaped wood bead, and then the round wood bead.
- Tie a knot to secure the beads in place
- Now you can tie the metal ring on the end of the loose string at your desired length.

# Final Assembly!



- Once you hang the mobile, you may need to make minor adjustments to balance it
- If one side is hanging lower than the other, slight move the strings on the opposite side, along the wood ring.
- Keep working with this until you find a good balance point.
- Keep in mind that it may never be perfectly balanced, as the weight of your shapes are all different!